

PRODUCT CATALOGUE



1

Expandable Container House
可扩展式集装箱房



2

Flat Pack Container House
打包箱式房屋



3

Folding Container House
折叠房屋

1

Expandable Container House

可扩展式集装箱房

Container modular house and prefab houses that can be used as a granny flat, spare room, rental investment, first home, downsizing, deluxe mining camp accommodation, crib room, training room, office and accommodation for caravan & holiday parks, bed and breakfasts and more!

Expandable House

Expandable container house is convenient to assemble and can be moved frequently. >

It has the large space for mobile living. The house will be folded to save space during transportation and can be installed quickly and easily.

It looks like a home, not a container, and they are strong and durable. Plug them into your mains or install solar with an eco-septic system and go completely off grid. Taking them down is a reverse process of installing and they fold down to the size of a container. Our plans can be modified and additions made to suit individual requirements. Move them with a tilt tray, they can be relocatable or permanent.



Advantage:

- (1) Fast installation: 2 hours/set, save labor cost;
- (2) Anti-rust: all material use hot galvanized steel;
- (3) Waterproof: without wood ceiling, wall;
- (4) Fireproof: Fire rating A grade
- (5) Simple foundation: just need 12pcs concrete block foundation;
- (6) Wind-resistant (11 level) and anti-seismic (9 grade)

Product parameters



Option size	20ft	40ft
Folding Size:	5850*2250*2530mm	11800*2250*2530mm
Expand Size:	5850*6360*2530mm	11800*6280*2530mm
Main material:	Galvanized steel structure with sandwich panel wall and doors, windows, etc.	
Weight:	2500kg	5000kg
Service life:	30-40 years	
Color:	White,Charcoal or customized	
Steel structure:	3mm Hot galvanized steel structure with 4 corner casts and (1)18mm fiber cement board; (2)1.6mm PVC flooring; (3)50mm rock woll ,eps or PU sandwich panel (4)Galvanized steel base plate.	
Roof:	3-4mm Hot galvanized steel structure with 4 corner casts and (1)Galvanized steel roof covering; (2)50mm -70mm eps sandwich panel or PU sandwich panel ; (3)50mm-70mm eps sandwich panel or PU sandwich panel ;	
Columns:	3mm Hot galvanized steel structure	
Wall:	50/75/100mm EPS/Rock woll/PU sandwich panel	
Door:	Made of steel/aluminum frame,dimension	
Window:	Made of PVC/aluminum fame.	
Connection kits:	PVC Connection kits for ceiling,floor and walls.	
Electricity:	3C / CE / CL / SAA Standard,with distribution box, lights, switch, sockets, etc.	
Optional accessories:	Furniture, sanitary, kitchen, A/C, electrical appliance for accomodation, office, dormitory, Toilet, kitchen, bathroom, shower, steel roof, cadding panels, decorative material, etc.	
Advantage:	1. Anti-rust: all material use hot glavanized steel; 2. Waterproof: without wood ceiling,wall; 3. Fireproof:Fire rating A grade; 4. Wind-resistant(11 level) and anti-seismic(9 grade)	

Model for choose

- Color pattern, roof, wooden platform, solar power supply system, etc. can be customized on demand;
- The size of the house can be customized according to customer needs, and the height can be increased to 2900mm;

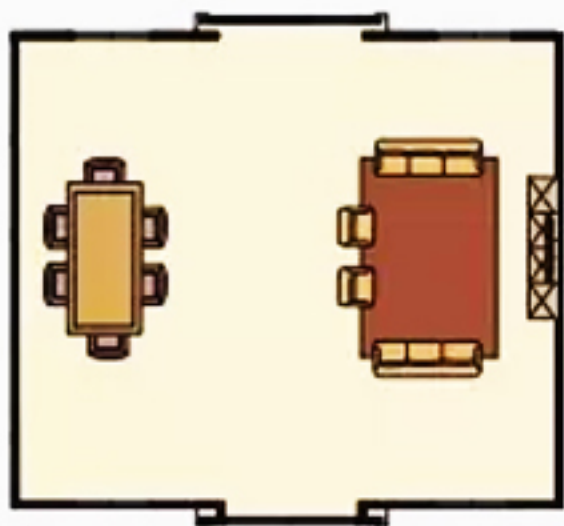


Exterior Decoration Optional:

- a. There can be a roof;
- b. There can be a decking;
- c. There can be a stairs;
- d. The wall can be decorated by PVC plate or the metal sheet claddingb.

Layout diagram of 20ft expandable house:

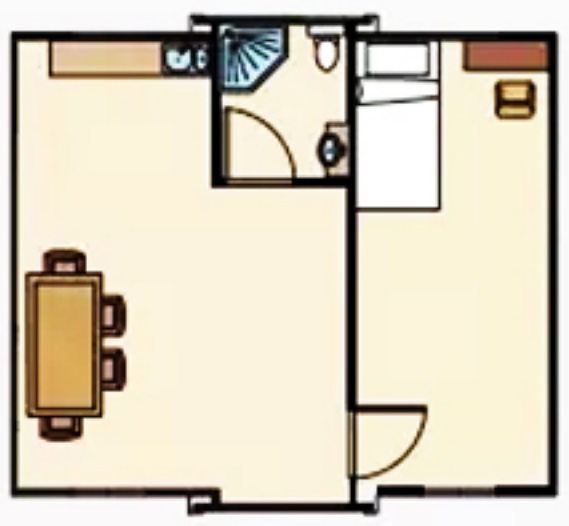
- 1. mpty home
- 2. one bedrooms +one toilet +open kitchen and living room
- 3. two bedrooms+one toilet +open kitchen and living room
- 4. two bedrooms+one toilet+open kitchen and living room
- 5. three bedrooms +one toilet+open kitchen and living room
- 6. four bedrooms+one toilet
- 7. Any other layouts you want to make



One Living room



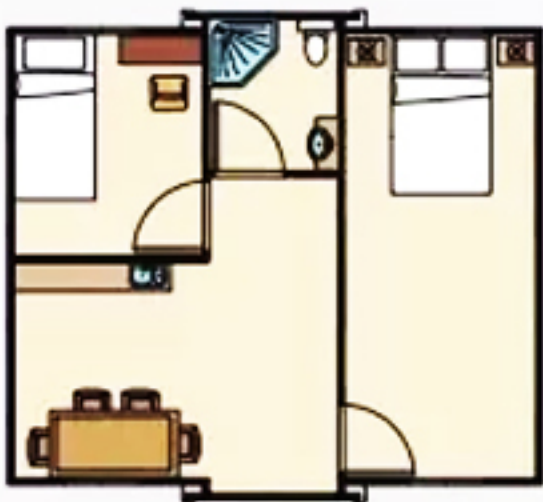
One Living room
One Bedroom
One Restroom



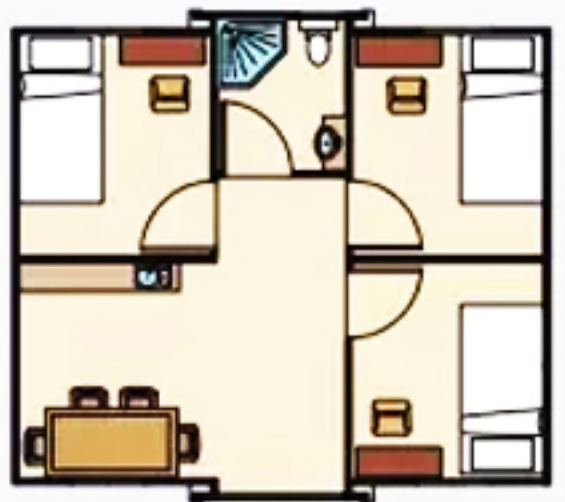
One Living room
One Bedroom
One Restroom



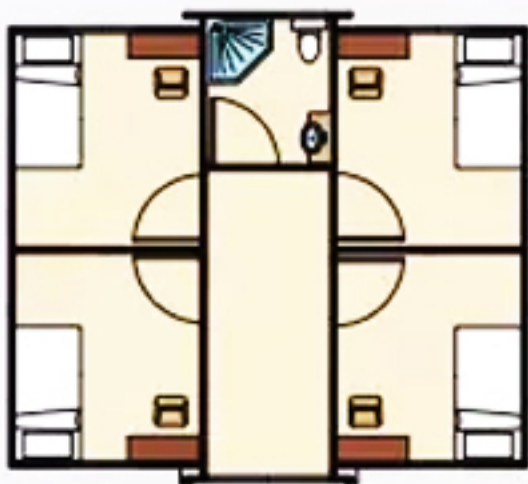
One Living room
Two Bedrooms
One Restroom



One Living room
Two Bedrooms
One Restroom

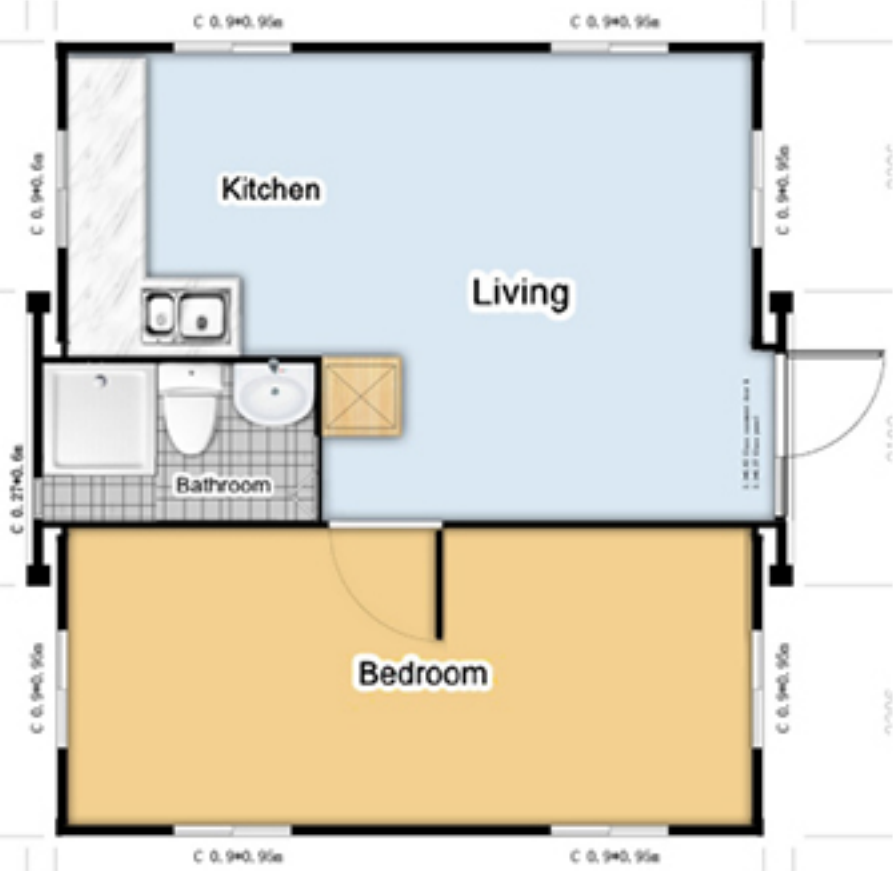


One Living room
Three Bedrooms
One Restroom



Four Bedrooms
One Restroom

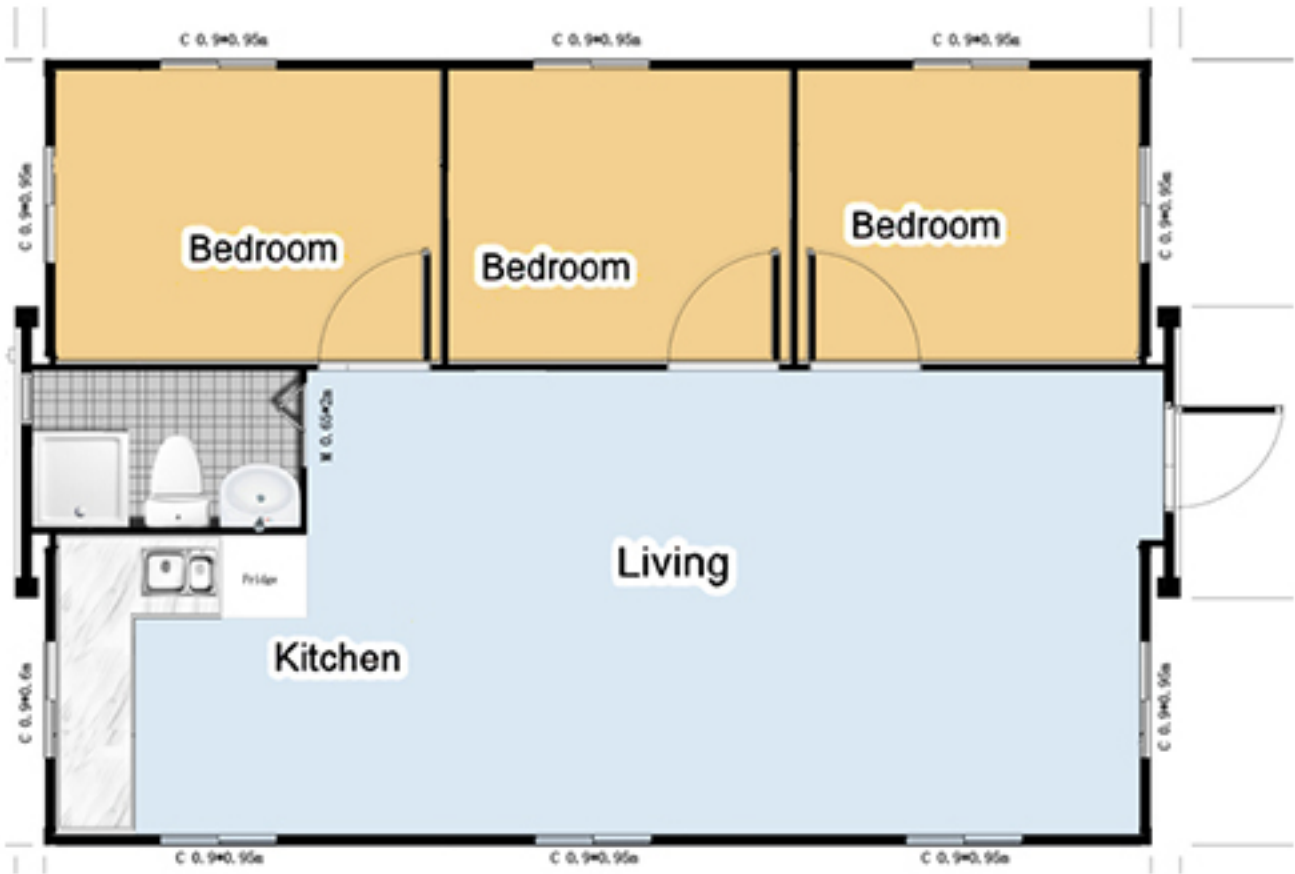
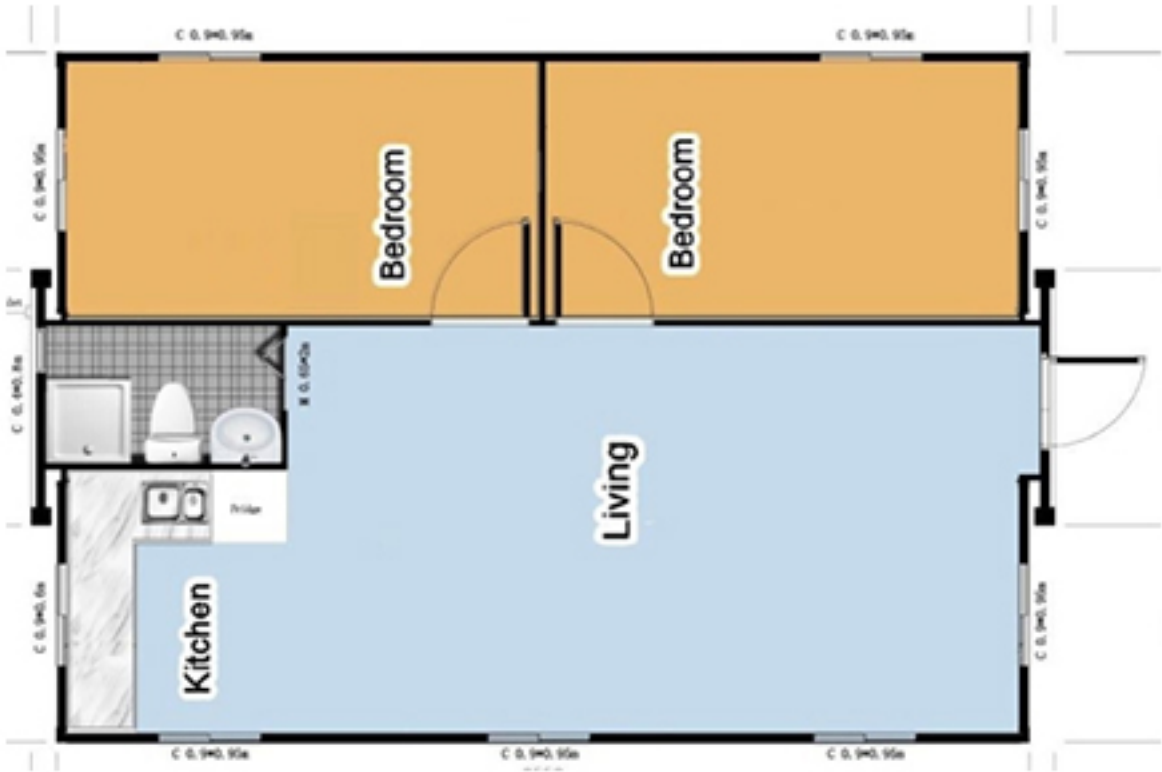
20ft expandable house:



40ft expandable house:



30ft expandable house:



Project Case



From Austraila Customer



From Canada Customer



From Europe Customer



From America Customer



Main frame materials



Fast and Easy Assemble Method

The expandable container house is 99% pre assembled , there is only 1% left which need to do by the buyer after open the container house.
We wil offer the assemble directions or the vedio to show , how to assemble.



• Opened area 37 SQM,Folding area 13SQM

Packaging and transportation

- Detail packing information:
- One 40HQ can hold two sets 20ft house;
 - One 40HQ can hold one set 40ft house;
 - Higher house need the frame container hold.



Bill of materials (custom selection)

Door



Entry door



Bedroom door



Bathroom door

Window



Jalousie



Broken Bridge Aluminum



PVC

Floor



Sample Picture



PVC floor

Wall and Roof Panel (50/75/100 mm)



EPS



PU sandwich panel



Rock wool

Exterior decoration



Metal Carved Board



PVC Cladding Panel

Electric and plumbing system



Bathroom



Shower room



Toilet



Wash basin

Kitchen



I type Straight cupboard



L-shaped cabinet



Straight cupboard 1

2

Flat Pack Container House

扁平包装集装箱房

The Flat Pack Container House is composed of top frame components, bottom frame components, corner columns and several interchangeable wallboards. Modular design concept and production technology are adopted to modularize a box house into standard parts, which can be assembled or hoisted on site at the site. The product takes the box as the basic unit, the box structure adopts special cold-formed galvanized steel components, the enclosure and thermal insulation materials are all made of non combustible materials, and the plumbing, electrical, decoration and supporting functions are all prefabricated in the project without secondary construction. Now you can move in after assembly or overall hoisting. It can be used alone, or spacious use space and lamination can be formed through different combinations of horizontal and vertical directions.



The packed box house has simple and safe structure and low requirements for foundation. It has the characteristics of fast installation, convenient movement and relocation, many turnover times and long service life. The modified products are disassembled without loss and construction waste. It can be used as a large space for office, accommodation, restaurant, bathroom, entertainment and combination, and can meet the requirements of construction engineering camp, municipal temporary house, field operation camp The demand for emergency resettlement houses, schools, hospitals, tourist stations and various commercial houses.

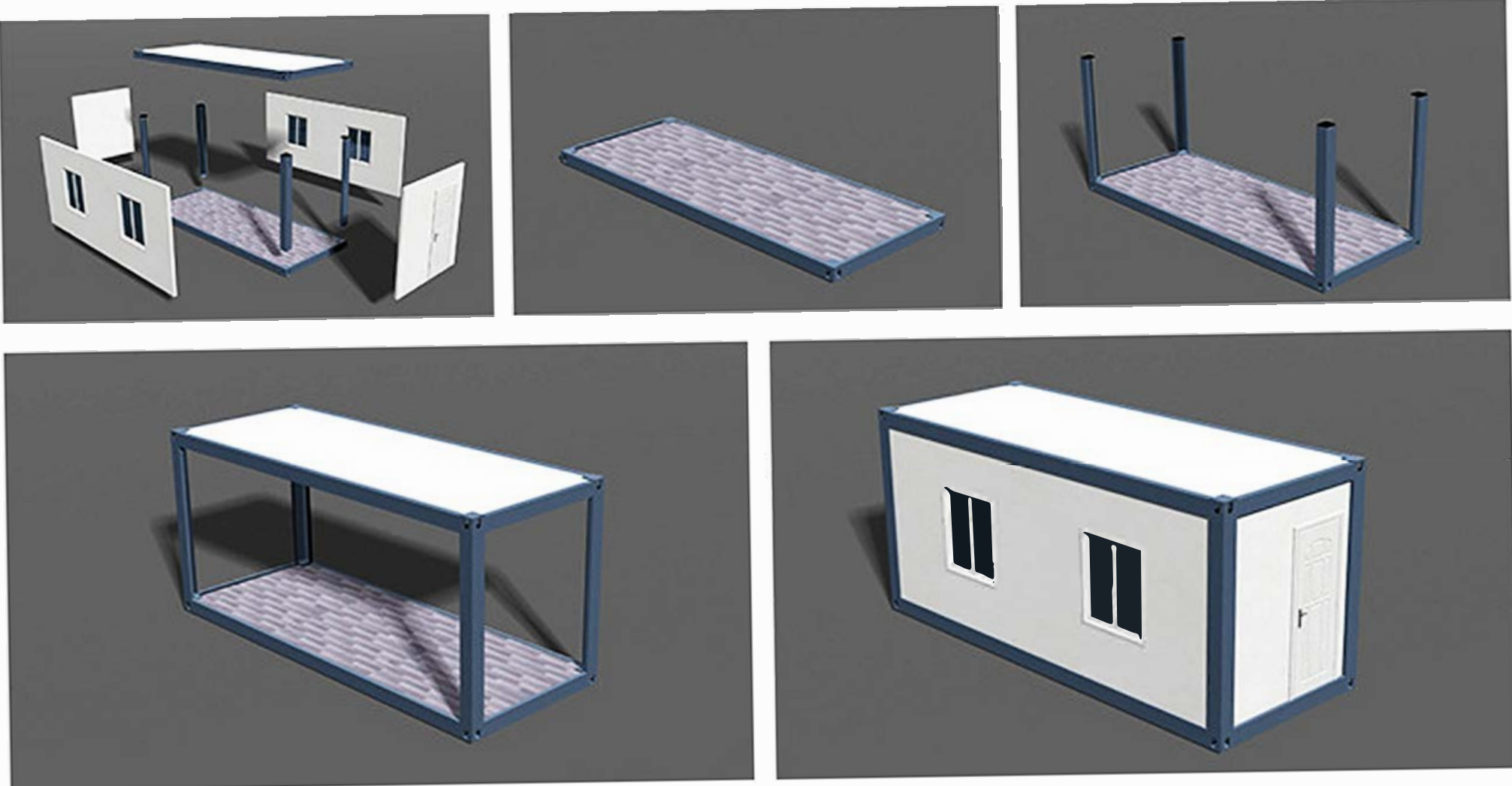
Product parameters

Standard house	size	5800mm*2400mm*2896mm		
index	Insulation	0.043W/m·K	Wind resistance	0.50kN/m²
	sound insulation	≥ 30dB	Fire performance	A级
	waterproof	2级	Seismic performance	8级
	Ground live load	2.0kN/m²	Roof live load	0.5kN/m²
Main structure	main section bar	The thickness of galvanized ground frame beam is 3.0mm; The thickness of galvanized roof frame beam is 3.0mm; The thickness of galvanized column is 3.0mm; Zinc content: 80g.		
	Structural	M12 * 40 high strength bolt		
	Spraying process	Galvanized process, polyester finish		
Wall panel	Glass wool core material	The thickness of color steel composite plate is 75mm, the thickness of color steel plate is 0.45, PE coating, white color, orange peel pattern on the outer plate and flat inner plate; No side steel strip S-shaped socket, no cold bridge for splicing; Glass wool unit weight 70kg / M³, The combustion performance is class a non combustible		
Roof system	Roof waterproof	Roof tile: color steel veneer bite thickness 0.5mm, 360 ° bite		
	Insulation layer	Glass wool roll felt, thickness 100mm, unit weight 14kg / M³, The combustion performance is class a non combustible. (double layer layout)		
	Damp proof course	PE resin film		
	Decorative layer	Yx28-277-831 strip ceiling board, 0.5mm, white gray		
Ground system	Bottom panel	910 type white corrugated board, 0.3mm thick		
	Thermal insulation material	Glass wool roll felt, thickness 100mm, volume weight 14kg / M³, The combustion performance is class a non combustible		
	Damp proof course	PE resin film		
	Structural plate	Cement fiber board, 18mm thick		
	Ground treatment	PVC environment-friendly plastic floor, 2.0mm thick, blue		
door	Entrance doors	Steel door, size ≥ w845 * h2035, stainless steel door lock		
window	Outer window	Size: w1120 * H1100 (two sides)		
decorate	Interior decorative	Color steel profiled corner piece, thickness 0.5mm, color Xinyu white		
electrical system	3C / CE / CL / SAA Standard,with distribution box, lights, switch, sockets, etc.			
Optional facilities	Outdoor single running stairs	4650 * 1100mm, checkered steel plate anti-skid step, square tube steel railing		
	Outdoor walkway board	2990 * 1050mm, steel cantilever beam, checkered steel plate, anti-skid walkway plate, square tube steel railing		
	Outdoor canopy	2990 * 1180mm, steel cantilever beam, 50mm color steel composite plate canopy panel		
	Indoor corridor box	Size 5800 * 1800 * 2896mm		

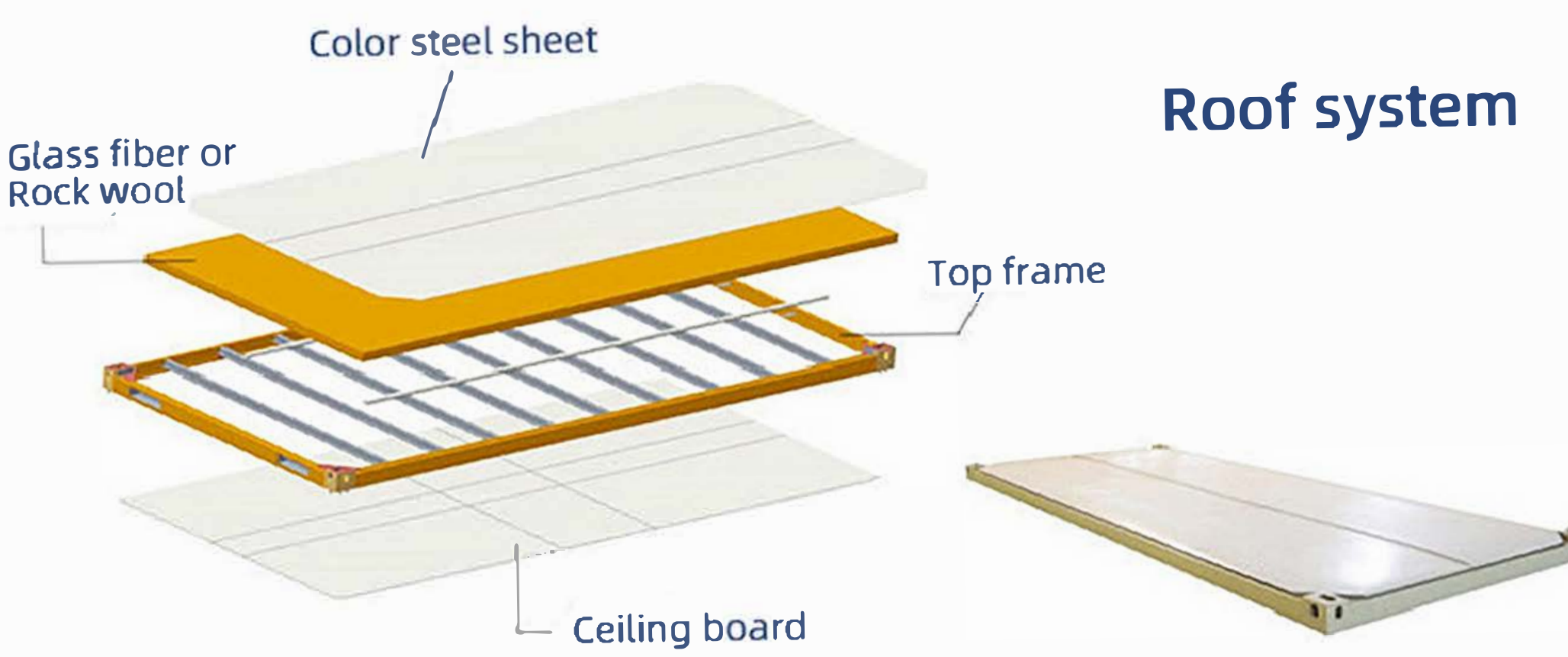
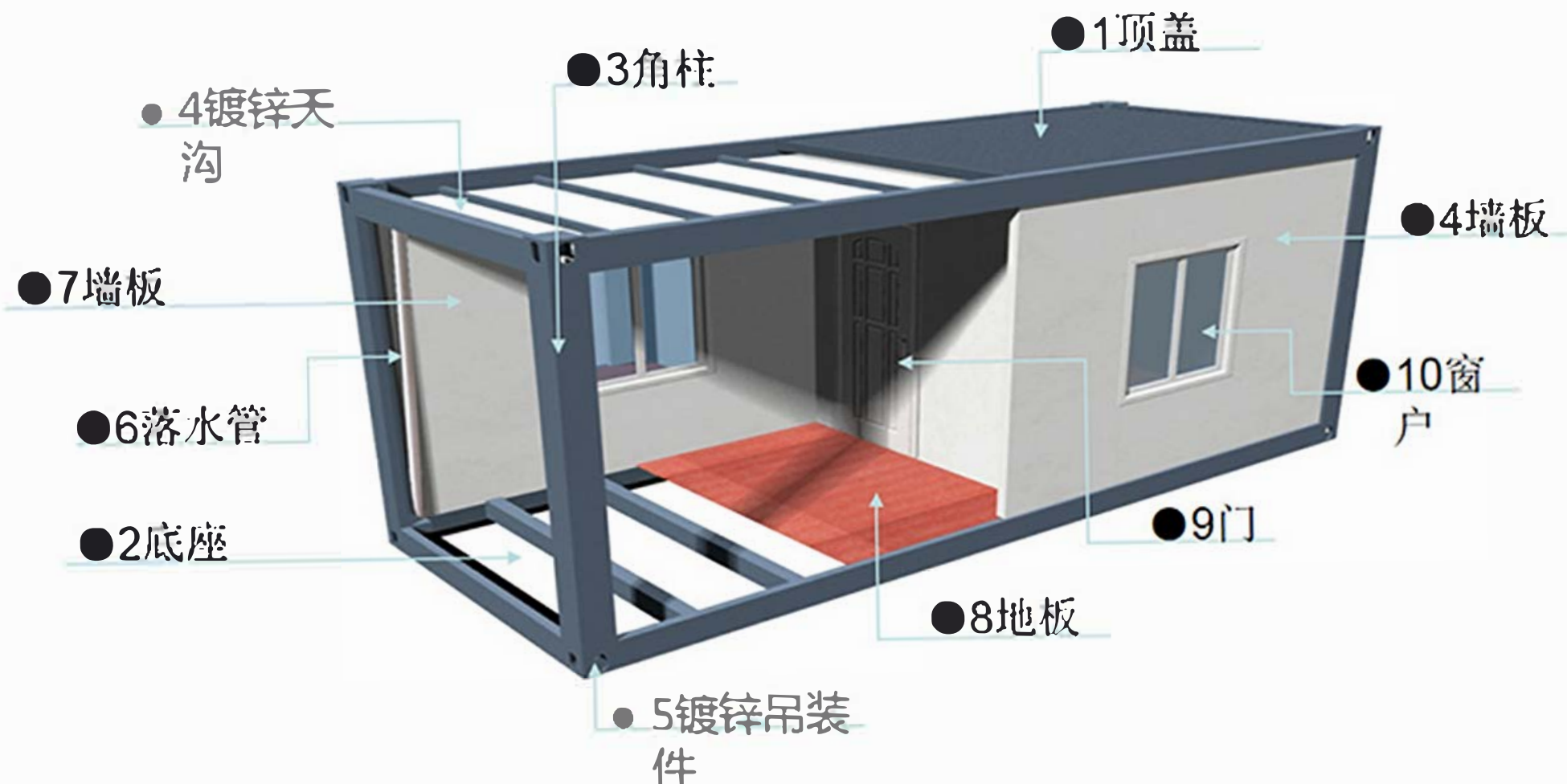
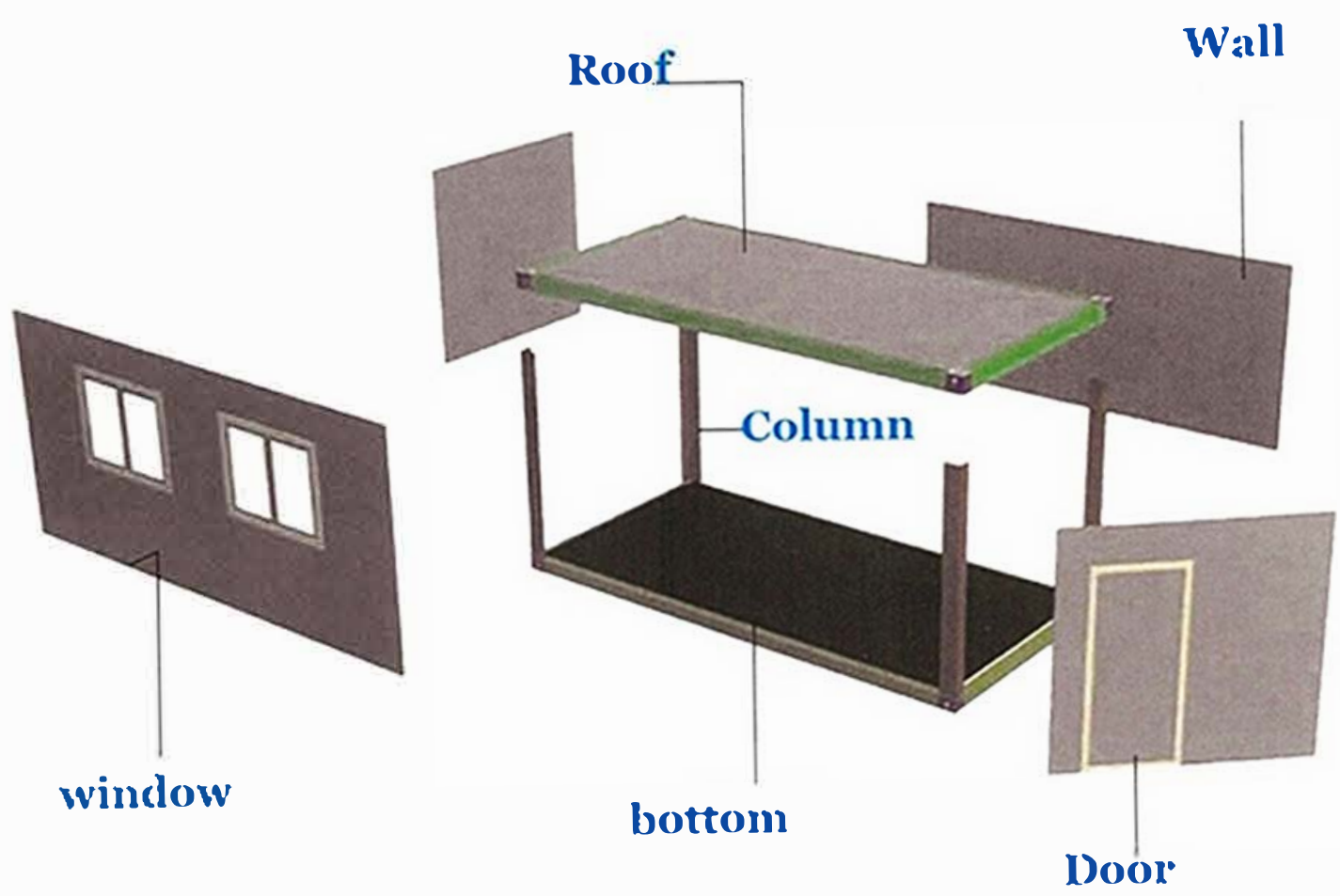
Model for choose



Fast and Easy Assemble Method



Main frame materials



Roof system





Main frame details



Thickened frame



Steel aluminum alloy window



door



Glass wool / rock wool wallboard



Paint baking parts

3

Folding Container House

折叠式房屋



- **Stretch freely and pull into shape**

The folding house adopts the way that the base and the lower end of each wall are connected by hinges, so that it can be retracted and put freely.

- **Repeated folding is not easy to deform**

It is constructed with galvanized steel, and the overall design is designed according to the architectural weighing.

- **Good material and stable structure**

The structure is stable and adopts galvanized steel plate, which is composed of structural beam, corner piece, side beam and bottom joist, with strong resistance.

Product parameters



basic feature	External size	5800*2480*2560mm
	Internal size	5640*2320*2400mm
	folding size	5800*2480*375mm
Frame structure	Top side member	Q235B special shaped custom beam 80 × 60 × 1.8mm
	bottom side rail	Q235B rectangular square tube 140 × 80 × 1.8mm
	Top side member	Q235B custom p-tube 40 × 80 × 1.8mm
	Bottom end side member	Q235B rectangular square tube 80 × 60 × 1.8mm
	Side wall frame	Q235B custom P tube 40 × 80 × 1.8mm
	Bottom bearing	Q235B customized square tube 40 * 40 * 1.7mm
	Top secondary beam	Q235B customized square tube 40 * 40 * 1.7mm
	Front and rear walls	Q235B custom p-tube 40 × 80 × 1.8mm
	Hanging head	Q235B 120mm*175mm (5mm)
	Folding hinge	Galvanized hinge 13mm
Box top	Protective coating for integral frame	Electrostatic plastic spraying / direct white plastic powder
	External roof	Galvanized sheet 0.5mm
	Internal ceiling	V910/0.3mm ±0.03mm
wallboard	Glass wool	Glass wool roll 75mm
	Side wall	75mm composite board 0.3mm + rock wool (volume weight 50kg) ± 0.03mm
	Front and rear wall panels	75mm composite board 0.3mm + rock wool (volume weight 50kg) ± 0.03mm
floor	Cement mixed floor 16mm	
electrical system	Electrical wiring shall be installed in strict accordance with moisture-proof specifications, and all electrical products shall comply with CE certification. Connect the circuit according to the circuit engineering specification, indoor: incoming line 4 ² Soft copper wire, one 20A short circuit breaker, socket incoming line 2.5 ², One five hole single socket, one five hole socket, one air conditioning socket and one LED lamp.	
Ordinary anti-theft door	High quality anti-theft door (warm white) size: 970mm * 1970mm	
window	920 * 920 single glass sliding window, plastic steel window, with protective fence, screen window, glass thickness 4mm (warm white)	

